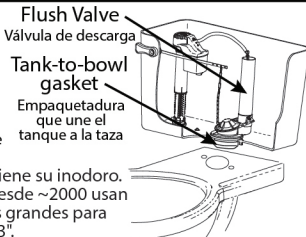


1) Confirm age of toilet. Only some toilets since ~2000 use larger 3" flush valve systems.

Note: Prior to ~2000, the standard flush valve drain opening was 2", use p/n 463BP.

Nota: Antes de 2000, la dimensión de la válvula de descarga estándar era 2"; use p/n 463BP.

Confirme cuántos años tiene su inodoro. Solo algunos inodoros desde ~2000 usan sistemas de válvulas más grandes para descarga de inodoro de 3".



2) Does not fit any Kohler® toilets.

No se adapta a ningún inodoro Kohler®.

3) Fits 2-piece toilets only. Does NOT fit any 1-piece toilets.

Se adapta solo a inodoros de 2 piezas. NO se adapta a inodoros de 1 pieza inodoros.



Fits toilets with 3" drain openings, including, but not limited to:
Se adapta a inodoros con aberturas de desagüe de 3", incluyendo:

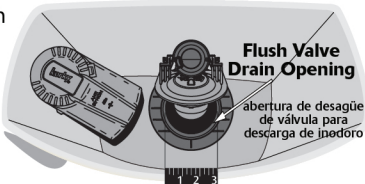
- American Standard®** Cadet® 3 (4019, 4021), Champion® (4260, 4272, 4281)
- Champion® 4 (4077, 4266, 4272, 4281)
- Aqua Source®** (AT1201, AT1203)
- Crane®** Sure Flush® (31242)
- Eljer®** Diplomat® (4019, 4021)
- Stratus® (4007)
- Titan® (141-0777)
- Titan® 4 (4272)
- Ferguson®** Pro Flo HET (PF9400)
- Gerber®** Avalanche® (28-890, HE-28-890)
- Jacuzzi®** Era® (BK37)
- Espre® (EZ36)
- Maxima® (EZ37)
- Perfecta® (EZ33, GU04959)
- Prestige® (GV80)
- Mansfield®** Barrett® (106)
- Summit® (386)
- Maverick® (112)
- Waverly® (3195)
- Pegasus®** Westminster (164-146)
- Toto®** Drake® (743S), Eco Drake® (743E)
- Tuscany®** Sereno® (11-105)

4) Verify size of flush valve drain by measuring the diameter of the opening.

Verifique el tamaño del desagüe de la válvula para descarga de inodoro midiendo el diámetro de la abertura.

Fits flush valves with 3" or larger drain openings.

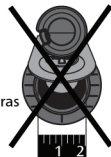
Se adapta a válvulas para descarga de inodoro con aberturas de desagüe de 7,62 cm o más grandes.



Does NOT fit flush valves with 2" drain openings.

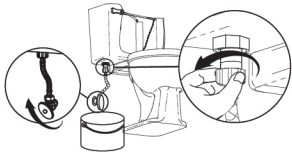
NO se adapta a válvulas para descarga de inodoro con aberturas de desagüe de 5,08 cm.

Use
p/n 463BP

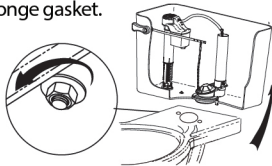


Installation Instructions

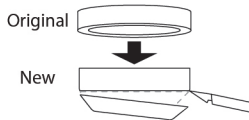
a) Turn off water supply. Remove water from tank. Detach water supply.



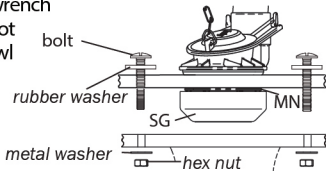
b) Remove nuts, washers, and tank bolts. Lift tank off bowl. Remove old sponge gasket.



c) Jacuzzi® toilet only
If Jacuzzi brand toilet with flat gasket, cut as shown.



d) Place new sponge gasket (SG) over mounting nut (MN). Place tank on bowl and assemble hardware. Alternate tightening each hex nut until tank is stable and level. Use adjustable wrench to tighten hex nuts if needed. Do not continue tightening if tank and bowl touch. Do not overtighten as the tank may crack.



e) Reconnect and turn on water supply.

