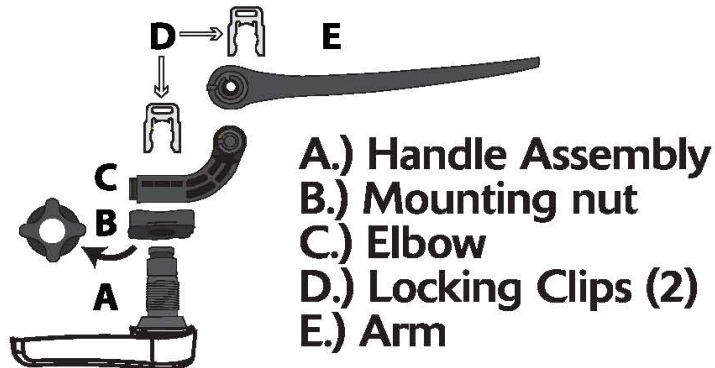
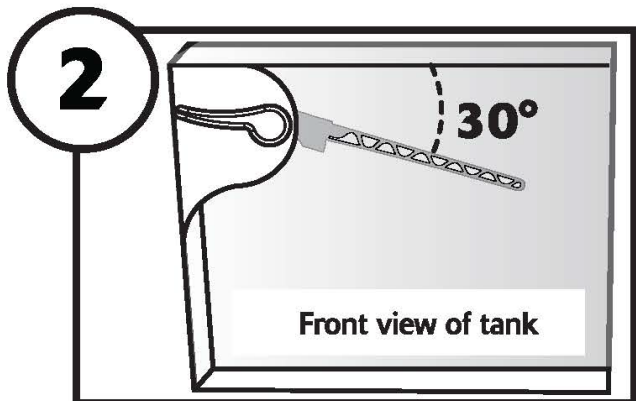


How to Install:



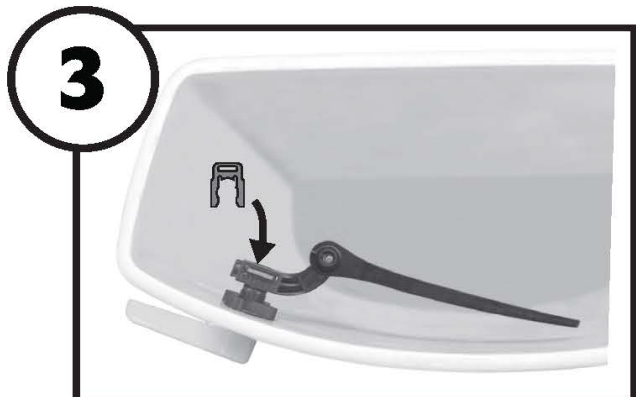
Mount handle

Remove locking clips (D). Separate elbow (C). Remove mounting nut (B) (Note: reverse threaded). Insert handle into hole & attach nut (B).



Attach & adjust arm

Attach elbow (C) at 30° angle from top of tank. Position arm (E) parallel to front of tank. Attach arm to elbow.



Attach chain

Insert both locking clips. Attach chain with minimal slack. If chain is short of arm, may adjust elbow angle.