

Fits: Kohler® AquaPiston® Class Five® & Class Six™

## Installation

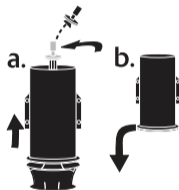
①



[korky.com/451](http://korky.com/451)

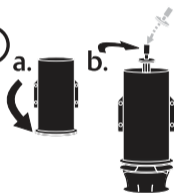
Watch video for  
full instructions

②



Remove old seal

③



Install new seal  
into groove

Instalación 1) Mire nuestro video de instalación: [korky.com/451](http://korky.com/451) 2) Retire el sello antiguo 3) Instale el nuevo sello en la ranura