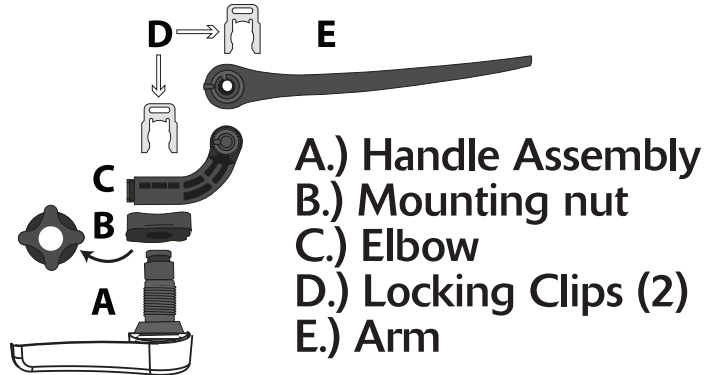
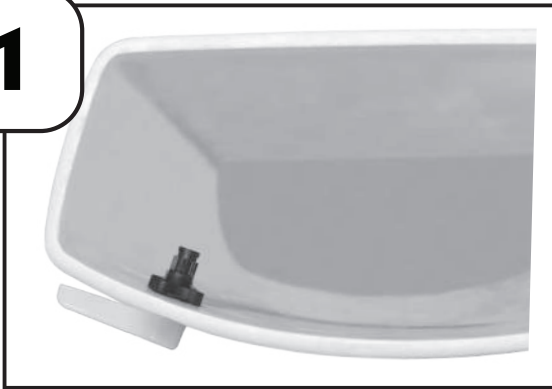


# How to Install

Click here to watch install video:  
<https://korky.com/6055>



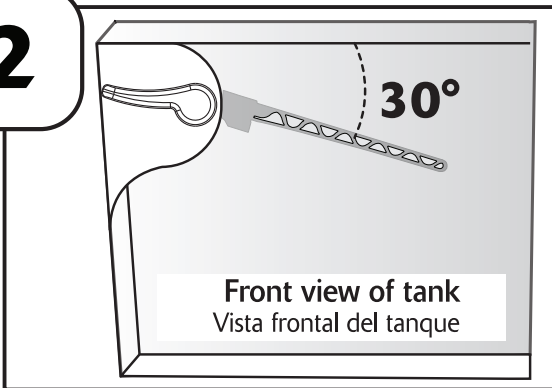
1



## Mount handle

Remove locking clips (D). Separate elbow (C). Remove mounting nut (B) (Note: reverse threaded). Insert handle into hole & attach nut (B).

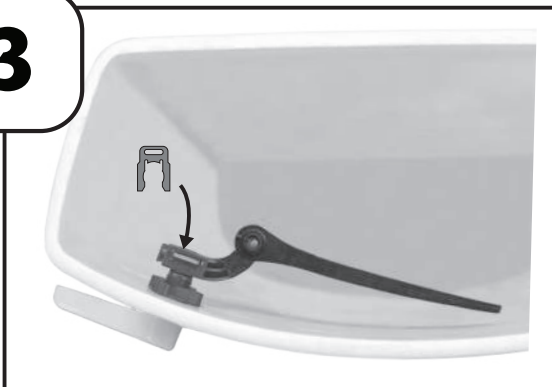
2



## Attach & adjust arm

Attach elbow (C) at 30° angle from top of tank. Position arm (E) parallel to front of tank. Attach arm to elbow.

3



## Attach chain

Insert both locking clips. Attach chain with minimal slack. If chain is short of arm, may adjust elbow angle.